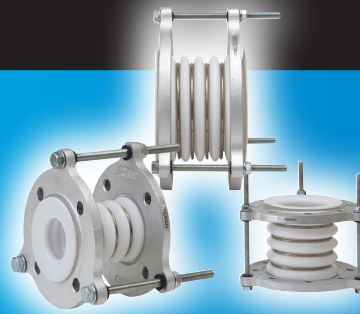


Fluoropolymer Flexible Joint Bellows Type **FLONEX α T-5**



Make-to-order products

Feature

Displacement Absorption

5-arch uniform thickness design fluoropolymer bellows make absorption easier with a short face to face dimension.

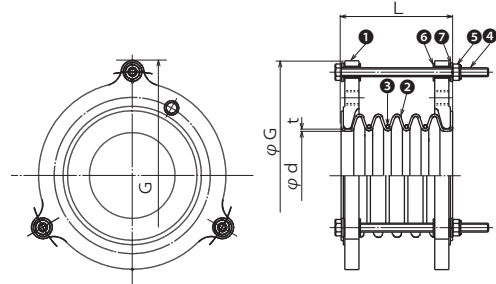
Clean = Pure

Virgin fluoropolymer material is free of any impurities or soluble substance such as stabilizers, antioxidants or carbon. It is considered as one of the most hygienic material.

Bellows

Unique forming method enable an even & uniform thickness & shape of the bellows.

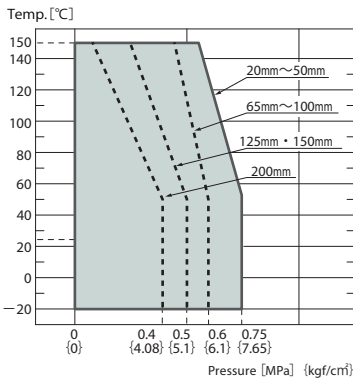
Structure



No.	Parts	Material	No.	Parts	Material
①	Flange	FCD	⑤	U nut	SS400
②	Bellows	Fluorine resin	⑥	Rubber bushing	CR
③	Reinforcing Ring	SUS304	⑦	Plain washer	SS400
④	Stop bolt	SS400			

Flange compatible dimension	Standard	JIS10K	
	changeable	<input type="radio"/> JIS5K <input type="radio"/> PN10 <input type="radio"/> PN16 <input type="radio"/> JIS20K <input type="radio"/> ANSI	
Material	Standard	FCD	
	changeable	<input type="radio"/> SS400	Different from above figure
		<input type="radio"/> SUS304	Different from above figure
		<input type="radio"/> SUS316	
<input type="checkbox"/> Polyvinyl chloride			

Operating Conditions and Performance



- Use after confirmation that maximum operation pressure and maximum service temperature is within the operation range.

Dimensions and Allowable Movements

Nominal Dia.		Dimension [mm]				Mass [Kg]	Allowable Movement [mm]				Installation Tolerances [mm]			
mm	inch	L	ϕd	t	G		Eccentricity	Elongation	Compression	Deflection angle	Eccentricity	Elongation	Compression	Deflection angle
20	3/4	70	23	2.5	141.2	1.9	8	15	15	10°	3	2	2	4°
25	1	70	23	2.5	166.2	2.1	8	15	15	10°	3	2	2	4°
32	1 1/4	70	30	2.5	176.2	2.4	8	15	15	10°	3	2	2	4°
40	1 1/2	80	36	2.5	181.2	2.5	8	20	20	10°	3	3	3	4°
50	2	110	46	3.0	202.6	3.4	12	25	25	10°	5	5	5	4°
65	2 1/2	130	60	3.0	229.0	4.7	12	30	30	10°	5	6	6	5°
80	3	150	72	3.3	242.2	5.4	15	40	40	10°	6	8	8	5°
100	4	150	93	3.5	257.6	7.2	18	40	40	10°	7	8	8	5°
125	5	150	114	3.5	319.9	12.0	18	40	40	10°	7	8	8	5°
150	6	150	140	3.5	349.9	14.0	18	40	40	10°	7	8	8	5°
200	8	250	190	4.0	393.6	20.0	22	50	50	10°	9	10	10	5°

- Mass is the data when material is FCD, and flange is JIS10K flange.
- Use a joint within the range of allowable displacement.
- Fixing allowable dimension is included in allowable displacement (allowable displacement = fixing time displacement + operation displacement).
- Each displacement in chart are data of single displacement, so for multiple displacements, correction is necessary. For correction method, refer to "Attention for handling or "TOZEN HP".
- Referring to "fixing bolt dimension table", and use fixing bolt. Nut is not necessary. (When companion flange is JIS 10K, material is SS400, and when plain washer and gasket are not used.)

This brochure may be revised without prior notice. We apologize in advance for any inconvenience this may cause.

Agent

TOZEN Corporation
8-4, Asahi, Yoshikawa
Saitama 342-0008 Japan

